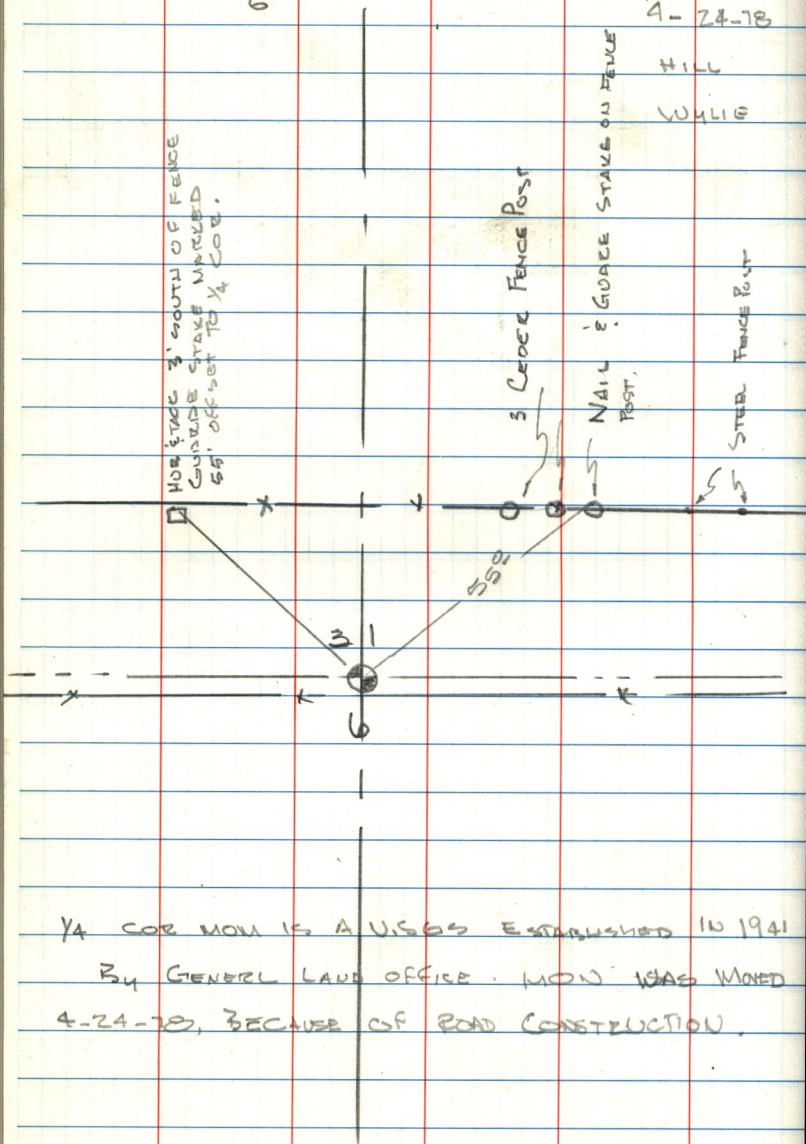


27
 1/4 COR 31 T 6 N R 1 E REF. (SS)

4-24-78

HILL

WYLLIE



1/4 COR MON IS A U.S.G.S ESTABLISHED IN 1941
 BY GENERAL LAND OFFICE. MON WAS MOVED
 4-24-78, BECAUSE OF ROAD CONSTRUCTION.